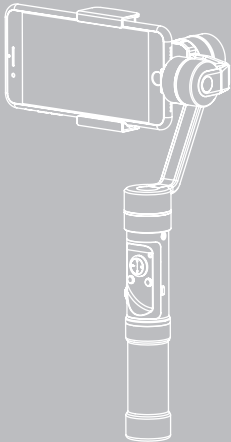




SMOOTH 3

User Guide

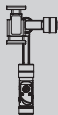


Contents

■ Packing List.....	1
■ Disclaimer and Warning.....	2
■ Quick Start Guide.....	7
■ Charging Guidelines	8
■ APP Download and Installation.....	9
■ Smartphone Installation	10
■ Balance Adjustment	11
■ Start Up.....	12
■ Introducing Gimbal Control Modes	14
■ Introducing Connection Ports and Various Operations	15
■ APP Operations.....	16
■ Usage of Main Accessories	19
■ Initialization and Calibration.....	21
■ Product Specifications.....	22
■ Warranty Card	23
■ Contact Card	25

Packing List

The product package comes with the following items. In case that any item is found missing, please contact ZHIYUN or your local selling agent.



SMOOTH 3 3-Axis
Smartphone Stabilizer 1



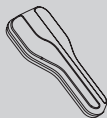
Micro USB Cable 1



Battery Compartment 1



26650 Li-Ion Battery 1



Storage Bag 1



Shoulder Strap 1

Thank you for using ZHIYUN SMOOTH 3. The information contained herein affects your safety and your legal rights and responsibilities. Read this entire document carefully to ensure proper configuration before use. Failure to read and follow the instructions and warnings herein may result in serious injury to you or bystanders, or damage to your device or property.

ZHIYUN reserves the right of final explanation for this document and all relevant documents relating to SMOOTH 3, and the right to make changes at any time without notice. Please visit www.zhiyun-tech.com for the latest product information.

By using this product, you hereby signify that you have read this document carefully and that you understand and agree to abide by the terms and conditions herein. You agree that you are solely responsible for your own conduct while using this product, and for any consequences thereof. You agree to use this product only for purposes that are proper and in accordance with all terms, precautions, practices, policies and guidelines ZHIYUN has made and may make available.

ZHIYUN™ accepts no liability for damage, injury or any legal responsibility incurred directly or indirectly from the use of this product. Users shall observe safe and lawful practices including, but not limited to, those set forth herein.

ZHIYUN™ is the trademark of Guilin Zhishen Information Technology Co., Ltd. (hereinafter referred to as "ZHIYUN" or "ZHIYUN TECH") and its affiliates. All product names or marks referred to hereunder are trademarks or registered trademarks of their respective holders.

Glossary

The following terms are used throughout the product literature to indicate various levels of potential harm when operating this product.

WARNING: Procedures, which if not properly followed, may incur property damage, grave accident, or serious injury.

CAUTION: Procedures, which if not properly followed, may incur property damage and serious injury.

NOTICE: Procedures, which if not properly followed, may incur property damage or minor injury.

Warning

Read the ENTIRE User Guide to become familiar with the features of this product before operating. Failure to operate the product correctly can result in damage to the product or personal property and cause serious injury. This is a sophisticated product. It must be operated with caution and common sense and requires some basic mechanical ability. Failure to operate this product in a safe and responsible manner could result in injury or damage to the product or other property. This product is not intended for use by children without direct adult supervision. DO NOT use with incompatible components or in any way otherwise as mentioned or instructed in the product documents provided by ZHIYUN. The safety guidelines herein contain instructions for safety, operation and maintenance. It is essential to read and follow all of the instructions and warnings in the User Guide, prior to assembly, setup or use, in order to operate the product correctly and avoid damage or serious injury.

Safe Operation Guidelines

CAUTION:

- 1)SMOOTH 3 is a high-precision control device. Damage may be caused to SMOOTH 3 if it is dropped or subject to external force, and this may result in malfunction.
- 2)Make sure the rotation of the gimbal axes is not blocked by external force when SMOOTH 3 is turned on.
- 3)SMOOTH 3 is not waterproof. Prevent contacts of any kind of liquid or cleaner with SMOOTH 3. It is recommended to use dry cloth for cleaning.
- 4)Protect SMOOTH 3 from dust and sand during use.

NOTICE:

Keep the handle stable when SMOOTH 3 is powered on, as shaking may cause failure to start up.

Reading Tips

Legends:  hints and tips

 important.

Battery Safety Guidelines

1. Prevent the batteries to come into contact with any kind of liquid. Do not leave batteries out in the rain or near a source of moisture. Do not drop the battery into water. If the inside of the battery comes into contact with water, chemical decomposition may occur, potentially resulting in the battery catching on fire, and may even lead to an explosion.
2. If the battery falls into water with the stabilizer during use, take it out immediately and put it in a safe and open area. Maintain a safe distance from the battery until it is completely dry. Never use the battery again, and dispose of the battery properly as described in the Battery Disposal section below.
3. If the battery catches fire, use water, water spray, sand, fire blanket, dry powder, or carbon dioxide fire extinguisher immediately to put out the fire. Please exting the fire by applying the methods recommended above according to the actual situation.
4. Never use non-ZHIYUN batteries. If replacement or backup is needed, please purchase new batteries from ZHIYUN's official website or authorized channels. ZHIYUN takes no responsibility for any damage caused by non-ZHIYUN batteries.
5. Never use or charge swollen, leaky, or damaged batteries. Never use or charge if the battery smells, or overheats (exceeding maximum temperature of 160° F / 71° C). If your batteries are abnormal, contact ZHIYUN or a ZHIYUN authorized dealer for further assistance.
6. The battery should be used within the temperature range from -10 ° C to 50 ° C. Use the battery in environments above 50° C can lead to a fire or explosion. Use of battery below -10° C can lead to serious battery damage.
7. Do not use the battery in strong electrostatic or electromagnetic environments. Otherwise, the battery protection board may malfunction.
8. Do not disassemble or use any sharp object to puncture the battery in any way. Otherwise, the battery may leak, catch fire or explode.
9. Do not mechanically strike, crush, or throw the battery. Do not place heavy objects on the battery or charger.
10. Electrolytes inside the battery are highly corrosive. In case of accidental contact of any electrolytes with your skin or eyes, rinse immediately with water for at least 15 minutes and seek medical advice as soon as possible.
11. Do not use the battery if it has been involved in a crash or heavy impact.
12. Do not heat the battery and never put the battery in a microwave oven or in a pressurized container.

13. Do not place the battery cell on a conductive surface (such as a metal desk surface).
14. Prevent use of wires or other metal objects that could cause positive and negative short-circuit to the battery.
15. If the battery terminal is dirty, wipe it with a clean, dry cloth. Otherwise it will cause a bad battery connection, which may result in energy loss or charging failure.

Battery Charging

Do not attach the batteries to a wall outlet or car charger socket directly. Always use a ZHIYUN approved adapter for charging. ZHIYUN takes no responsibility if the battery is charged using a non-ZHIYUN charger.

Do not put the battery and charger near flammable materials or on flammable surfaces (such as carpet or wood). Never leave the battery unattended during charging to prevent any accident.

Do not charge the battery immediately after use, because the battery temperature may be too high. Do not charge the battery until it cools down to normal room temperature. Charging the battery with its temperature over 40° C or lower than 15° C may lead to leakage, overheating, or damage.

Examine the charger before use, make sure there is no damage to the enclosure, cord, plug, or other parts. Never use a damaged charger. Do not clean the charger with any liquid containing alcohol or other flammable solvents. Disconnect the charger when not in use.

Battery Storage

Keep batteries out of the reach of children and pets.

Do not leave the battery near heat sources such as a furnace or heater, or inside of a vehicle on hot days. Never expose the battery in any environment with temperature of over 60° C. The ideal storage temperature is 22° C-28° C.

Store batteries in a dry environment.

Do not leave the battery unused for too long after it has been completely discharged to prevent over-discharge of battery which may result in battery damage and permanent failure.

Battery Maintenance

Never use the battery when the temperature is too high or too low.

Do not store the battery in any environment with a temperature of over 60° C.

Transportation Notice

Discharge the battery power to 5% or lower before carrying the battery on an airline flight. Only discharge the battery in a fireproof location, ideally in a dry and open area.

Do not store or transport batteries together with metal objects such as eyeglasses, watch, and jewelries, etc.

Do not transport damaged batteries. When transporting, be sure to discharge the battery to less than 50%.

Battery Disposal

Dispose of the battery in specific recycling boxes only after a complete discharge. Do not put away the battery in regular trash containers. Strictly follow your local regulations regarding the disposal and recycling of batteries.

NOTICE

Battery Use

Make sure the batteries are fully charged before each time of use.

Battery Charging

The battery will stop charging automatically when it is full. Disconnect the batteries from the charger when fully charged.

Battery Storage

Discharge the battery to 40%-65% if it will NOT be used for over 10 days. This can greatly extend the battery life.

The battery enters hibernation mode when voltage gets too low. Charge the battery will bring it out of hibernation.

Remove batteries from the stabilizer when not in use and store them in a specialized container.

Battery Disposal

If the battery cannot be fully discharged, do not leave it in the recycling box, but contact a professional battery disposal/recycling agent for further assistance.

This document is subject to change.

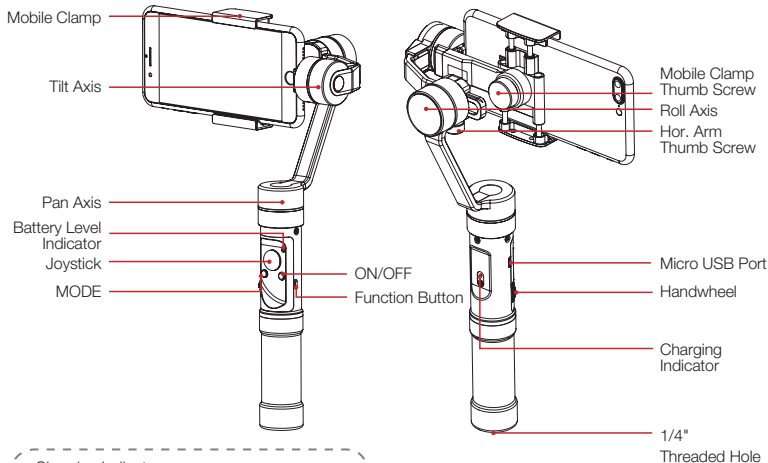
ZHIYUN™ is a trademark of ZHIYUN TECH.

Copyright © 2020 ZHIYUN TECH. All rights reserved.

Get to Know SMOOTH 3

Check the product package before use, make sure that all items below have arrived with the product. In case that any item is found missing, please contact ZHIYUN or your local selling agent.

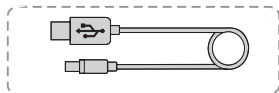
NOTICE: Camera is not included in product package, and shall be bought separately. The depictions provided herein are for reference only.



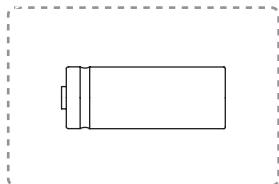
Charging Indicator

- Shines solid RED light when charging
- Shines BLUE light when fully charged

The Micro USB cable can be used for direct charging of SMOOTH 3 without need to take out the battery. In addition, it can also be used for firmware upgrade and calibration by connecting the stabilizer to a computer.



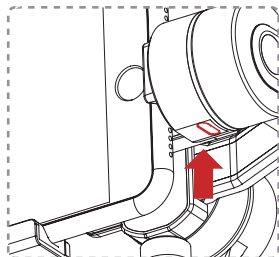
Micro USB Cable
26650 Li-ion Battery
Capacity: 4600mAh
Voltage: 3.7V



NOTICE

- 1.This charging method is for charging IMR 26650 Li-ion Battery only. Do not charge batteries of other models or brands, otherwise it may lead to accident.
- 2.Use qualified 5V adapter with output current of $\geq 1000\text{mA}$ only. Charging time depends on the max. output current of the adapter.

Please use and charge batteries provided or approved by ZHIYUN only. ZHIYUN will not take any responsibility for explosion, fire and/or accidents caused by non-ZHIYUN batteries.



By using a dedicated mobile charging cable provided by ZHIYUN, users can charge their smartphone directly through the power output port on tilt axis of the SMOOTH 3 stabilizer.

(The mobile charging cable shall be purchased separately.)

APP Download and Installation



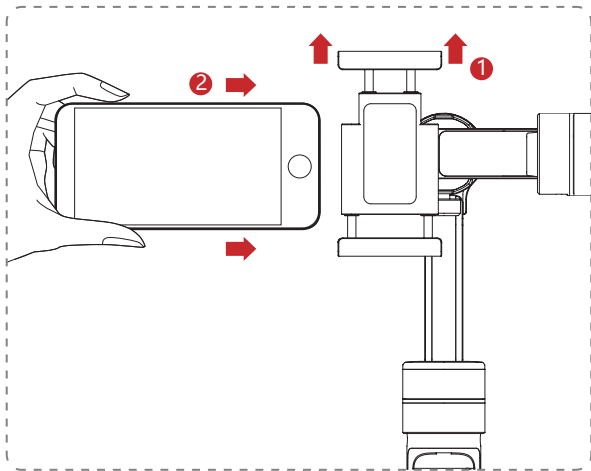
Download the APP from the “Downloads” page on ZHIYUN's official website www.ZHIYUN-TECH.com, or by directly scanning the QR code on the left (Android 5.0 above or iOS9.0 above required) to download. Users can download the APP by searching "ZY Play" in Google Play or APP Store.

The ZHIYUN APP is subject to regular update, try out now to discover more functions.

Smartphone Installation

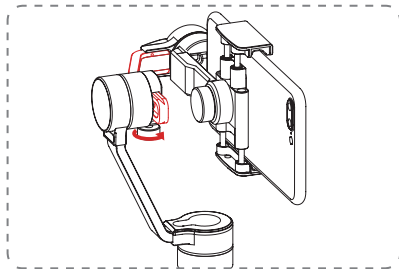
Push and hold open the camera clamp, slide the smartphone in as close as possible against the tilt axis motor, and clamp on.

! Do not power on the stabilizer before the smartphone is properly mounted.



1. Adjustable length of horizontal arm 28mm
2. Clamp supporting range 58-88mm

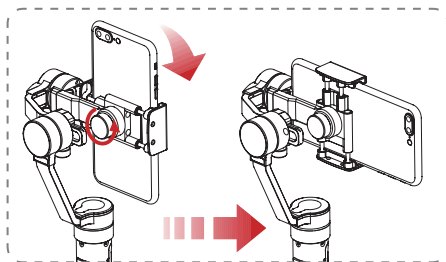
Gravity Center Adjustment



1. Proper adjustment of gravity center ensures better power saving during operation.
2. Loosen the Hor. Arm Thumb Screw to adjust the gravity center by sliding the horizontal arm (as marked red in the Figure) until the smartphone stays still and vertical on the tilt axis.
3. Tighten the Thumb Screw after the smartphone is well balanced in level to ensure normal operations.

! The scale mark on the horizontal arm allows easier balancing adjustment as the user can memorize the specific balancing position for mounting of most used devices.

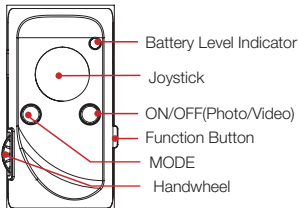
Switching Mobile Mounting Direction



Loosen the Mobile Clamp Thumb Screw on the back and rotate the mobile clamp to the desired direction (either in horizontal or vertical). Tighten the Thumb Screw to ensure normal operations.

! Make sure the stabilizer is powered off before changing the mobile mounting direction.

Control Panel Introduction

**Battery Level Indicator**

- Quick flashing blue light (the flashing frequency indicates different battery level):
 - Quick flash 4 times for battery level of 76%-100%.
 - Quick flash 3 times for battery level of 51%-75%.
 - Quick flash 2 times for battery level of 26%-50%.
 - Quick flash 1 time for battery level of 1%-25%.
 - Solid blue light: Indicates current active control mode as Locking Mode.
- Shines yellow light when the stabilizer is powered ON/OFF:
 1. Quick flash for 3 sec. and shines solid for 1 sec. when powered on.
 2. Quick flash for 3 sec. when powered off.
 3. Quick flashing during firmware upgrade.
- Solid red light: Indicates malfunction with the gimbal.

Joystick Operation

Joystick controls the camera movement when pushed or pulled up/down and left/right.

Power/Shutter

1. Power on/off the stabilizer by pressing the Power button for about 3 sec. 2. The Power button is used for camera shooting controls when paired to the Mobile APP. a) Photo mode - Single press to take a photo; b) Video mode - Single press to start/stop video recording; or double press to take a photo without exiting the Video mode.

Handwheel

When connected to a smartphone with the ZY Play APP on, turn up or down the Handwheel can adjust settings of focal length, ISO, white balance, shutter speed or exposure compensation, whichever is selected in the APP or through the Function Button.

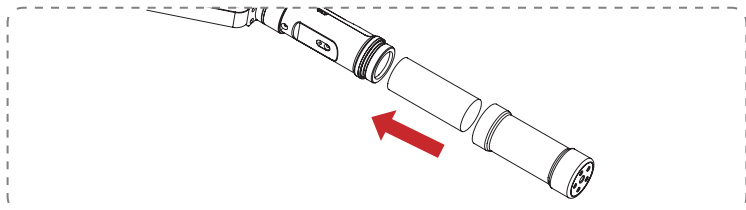
Function Button

When connected to a smartphone with the ZY Play APP on, by activating the Manual Mode in the camera setting panel, single press the Function Button can switch between settings items including focal length, ISO, white balance, shutter speed and exposure compensation.

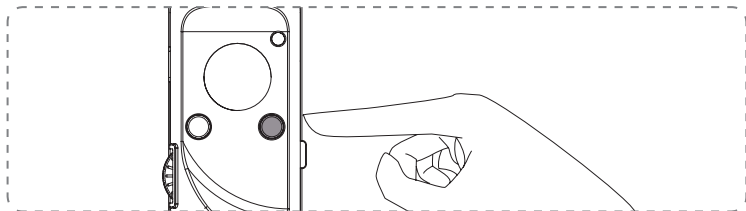
Mode Button

Press for 1 second to enter or exit standby mode. Single press to switch between pan-following and lock mode. Quick double press to enter the following mode. Quick triple press to enter the selfie mode (180° rotation on pan axis)

How to Power ON/OFF

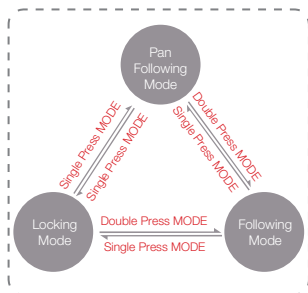


Rotate to loosen the end cover, then install a 26650 Li-ion battery (with the positive pole heading the arrow direction as shown above). Make sure to tighten the end cover properly after battery installation, or the stabilizer cannot be turned on.

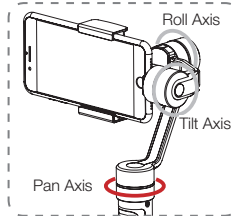


After the batteries are installed properly, long press the power button for 3 sec. to power on.

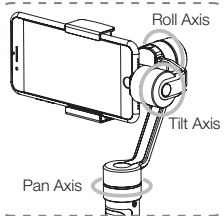
- !** Please use batteries provided or approved by ZHIYUN only, otherwise it may cause accidents. When using the stabilizer for the first time, please hold the camera with one hand to prevent severe shaking of the camera in case a malfunction occurs to the stabilizer (in very rare cases).



Mode Switch Schematic Figure

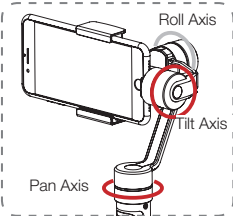


Pan Following Mode: The smartphone pans left/right following the movement of the stabilizer while the tilt and roll axes are locked. Push the joystick up/down allows manual control of the tilt axis.



Locking Mode: This mode locks movement of all three axes to keep the camera still and stable. Push the joystick up/down and left/right allows manual control of the tilt axis and pan axis.

Following Mode: The camera



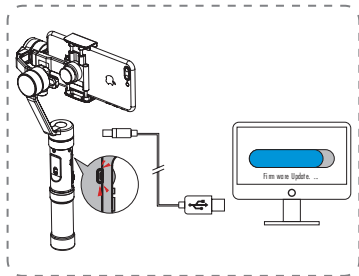
pans and tilts following the movement of the stabilizer. Push the joystick left/right allows manual control of the roll axis.

Mode switch:

The stabilizer enters Pan Following Mode by default each time when powered on. Switch into Locking Mode by single pressing on the MODE button. Double press the MODE button to enter the Following mode. Single press the MODE button under the Following Mode will return to the previous mode. Quick press MODE three times and the camera will turn 180° along the pan axis while the active control mode remains unchanged.

See ZHIYUN's product training videos on www.zhiyun-tech.com for more operation tips.

Firmware Upgrade thru PC

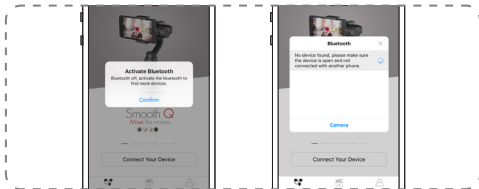


Connect the stabilizer to your computer using the Micro USB cable for firmware upgrade and on-line calibration. Calibration can also be operated through mobile APP.

1. Visit Zhiyun's official website:
www.zhiyun-tech.com
2. Click to open the "DOWNLOAD" page and download the USB driver at "Software download" (USB driver is not required if you are using MAC or WIN 10 system) and the latest firmware upgrade package at "Data download" to support your gimbal stabilizer.
3. Connect the stabilizer to your PC with a USB cable, power on it to finish driver installation.
4. Power on your stabilizer and long press the MODE button to enter the standby mode.
5. Click to open the upgrade calibration tool on your computer and follow the instruction from the tutorials (including Initiation Description, Firmware Upgrade Description and Calibration).

⚠ Make sure the battery has been properly installed during firmware upgrade. If upgrade fails, the indicator will shine solid RED light. In this case, please find and open "log.txt" file from "Zhiyun" on My Computer after connecting the stabilizer. Then, make a screen shot of the text content therein and send it to ZHIYUN's customer service.

Connecting the Stabilizer to Smartphone



1. Power on the stabilizer.
2. Turn on Bluetooth in Settings of your smartphone.
3. Tap the ZY Play APP icon to open. Tap the signal icon on the top of the APP screen to search for nearby signals, choose your stabilizer to connect.

How to Take Photos & Videos




Photo/Video Switch thru the Stabilizer

Single press the Power/Shutter button to take a photo.

Double press the Power/Shutter button to start/stop video recording.

Photo/Video Control and Settings thru APP

1. Tap the Photo/Video icon on the left of ZY Play operation screen to switch between "PHOTO" and "VIDEO" shooting.

- a. When in photo shooting mode, tapping **right** on the right side of the screen will open a menu, on which you can select a shooting mode: single shot, panorama, and long exposure.
 - b. When in video shooting mode, tapping **allow**s you to select a recording mode: default, slow motion, time lapse and moving time lapse.
2. Tap  on the left of ZY Play operation screen to switch between the rear and front cameras.

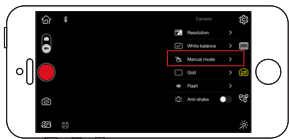
 Long press the Function Button can also make front/rear camera switch.


How to Adjust Stabilizer Parameters



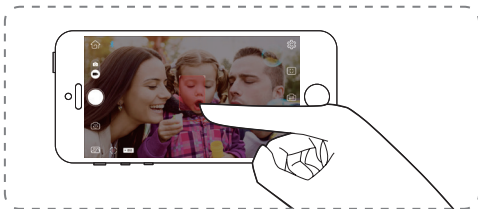
Tap the Gear icon onscreen to open the “Settings” menu, and select PTZ. Tap to select a specific item and then adjust the parameter by rolling up/down. Tap Save to finish adjustment.



How to Activate Handwheel Manual Control Mode



1. Tap  on the right of the operation screen, select to activate Manual control mode.
2. Under Manual control mode, single press the Function button on the stabilizer handle can switch between settings options including focal length, ISO, white balance, shutter speed and exposure compensation.
3. In each of these settings options, you can make precise adjustment by rolling the Handwheel up/down.

How to Use Object Tracking

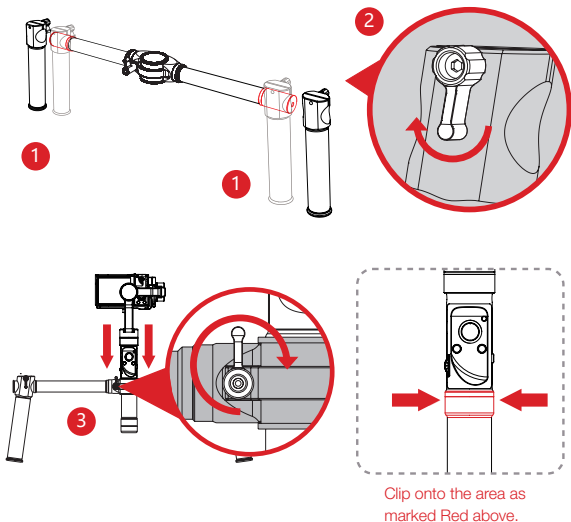


1. Tap  on the bottom left of the operation screen to activate Object Tracking function (the stabilizer enters Locking Mode automatically when this function is activated).
2. After the function is activated, drag to draw a box onscreen around the target object will enable auto tracking.
3. Tap Exit beside  to stop Object Tracking.

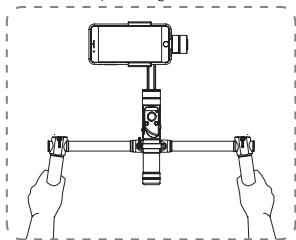
Crane-EH001 CRANE Extended Handle (purchase separately)

Installation method:

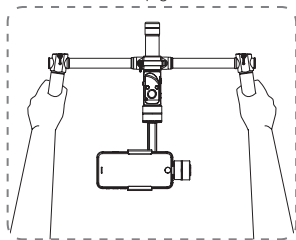
1. Insert in the two handles from the two sides of the horizontal rod.
2. Tighten the screws on the handles.
3. Loosen the screws on the fixing clamp to install the stabilizer, then tighten the screw to fix it.



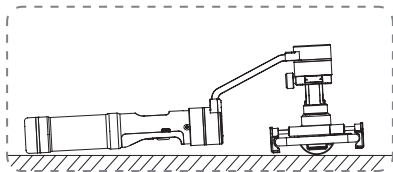
Top down gesture



Bottom up gesture



Initializing the Stabilizer



Initialize the stabilizer under the following circumstances:

- 1.Slight deviation is found in the tilt angle of the camera in level position after startup.
- 2.Slight deviation is found in the roll angle of the camera in level position after startup.
- 3.Frequent small angle correction is found when the camera is in level position while the stabilizer stays still.

Initialization Procedure

- 1.Install the batteries and smartphone properly.
- 2.Power on the stabilizer.
- 3.Press the MODE for 3 sec. to enter standby mode.
- 4.Put the stabilizer still on a table surface in random pose, wait for about 10 sec., and the stabilizer will automatically complete initialization.

On-line Calibration

Calibrate the stabilizer when any of the following circumstances occurs:

1. Deviation is found in the balancing of the smartphone even after initialization.
2. The stabilizer has not been used for a long time.
3. The stabilizer is exposed to significant temperature change.

Calibration Method

- 1.Visit ZHIYUN's official website: www.ZHIYUN-TECH.com.
- 2.Click to open the "Downloads" page, and find ZHIYUN's Gimbal Tools as well as online calibration tutorial;
OR
- 3.Operate calibration on the ZY Play APP by connecting to the smartphone.

	Min.	Standard	Max.	Remarks
Input Vol.	3.6V		4.3V	
Operation Current	80mA	110mA	6000mA	
Operation Temperature	-10° C		45° C	
Operation Time		12h		Tested under static operation after proper balancing
Weight		440g		Excluding battery
Tilt Angle Range		320°		
Roll Angle Range		320°		
Pan Angle Range		360°		Unlimited rotation
Compatible Models	Smartphones with sizes under 6.0"; GoPro 3/4/5			Accessories for use with GoPro shall be purchased separately
Controllable Tilt Angle	-135°		+185°	
Controllable Roll Angle	-30°		+30°	
Controllable Pan Angle		360°		Unlimited rotation
Payload	75g		260g	
Charging Time		2.5h		
Charging Voltage		5V		
Charging Current		2000mA		
Power Output Vol.		5V		
Power Output Current		1000mA		

Warranty Period

1. Customers are entitled to replacement or free repair service in case of quality defect(s) found in the product within 15 days upon receipt of the product.
2. Customers are entitled to free repair service from ZHIYUN for any product proven defective in material or workmanship that results in product failure during normal consumer usage and conditions within the valid warranty period, which is 12 months counting from the date of delivery.

This warranty does not apply to the followings

1. Products subjected to unauthorized repair, misuse, collision, neglect, mishandling, soaking, accident, and unauthorized alteration.
2. Products subjected to improper use or whose labels or security tags have been torn off or altered.
3. Products whose warranty has expired.
4. Products damaged due to force majeure, such as fire, flood, lightning, etc.

Warranty Claim Procedure

1. If failure or any problem occurs to your product after purchase, please contact a local agent for assistant, or you can always contact ZHIYUN's customer service through email at service@zhiyun-tech.com or website at www.zhiyun-tech.com.
2. Your local agent or ZHIYUN's customer service will guide you through the whole service procedure regarding any product issue or problem you have encountered.
3. ZHIYUN reserves the right to reexamine damaged or returned products.

Customer information

Customer Name :

Contact No :

Address :

Sales Information

Sales Date :

Prod. Serial No :

Dealer

Contact No :

#1 Maintenance Record

Service Date :

Signature of Repairman :

Cause of Problem :

Service Result :

 Solved Unsolved Refunded(Replaced)



Website



Weibo



Vimeo



Google+



Facebook



Wechat



Youku



Youtube

Tel: +86 400 900 6868

USA Hotline: +1 808-319-6137,9:00-18:00 GMT-7,Mon-Fri

Europe Hotline: +49 (0) 61018132180,10:00-17:00 GMT+1,Mon-Fri

Web: www.zhiyun-tech.com

E-mail: service@zhiyun-tech.com

Address: 09 Huangtong Road, Tieshan Industrial Zone, Qixing District, Guilin, 541004, Guangxi, China

Certificate of Quality

This product is confirmed to meet quality standards and permitted for sale after strict inspection.

QC Inspector: _____




Please download the latest version from www.zhiyun-tech.com

This document is subject to change.

ZHIYUN™ is a trademark of ZHIYUN.

Copyright©2020 ZHIYUN. All rights reserved.



Perfecting the moment

zhiyun-tech.com